



Grandstream Networks, Inc.

GXP1620/1625/1628 Business IP Phone BLF Configuration Guide



GXP1620/1625/1628 BLF Configuration Guide

Index

INTRODUCTION..... 4

OVERVIEW OF FUNCTIONS..... 5

 CONFIGURATION VIA WEB BROWSER 5

 BLF KEYS CONFIGURATION ON LINE KEYS..... 6

 BLF KEYS CONFIGURATION ON MPKs (GXP1628 ONLY) 9

 VISUAL INDICATORS 13

Table of Tables
GXP1620/1625/1628 BLF Configuration Guide

Table 1: Default Passwords for Login Page 6
Table 2: The BLF Indicators Status in Different Scenarios..... 14

Table of Figures
GXP1620/1625/1628 BLF Configuration Guide

Figure 1: Programmable Keys Settings 6

Figure 2: Configure Multi-Purpose Keys on Line Keys 7

Figure 3: Select Associated Account on Line Keys..... 7

Figure 4: Add Description on Line Keys 8

Figure 5: Add Extension Value on Line Keys 9

Figure 6: Programmable Keys Settings on MPKs..... 10

Figure 7: Configure Multi-Purpose Keys on MPKs 10

Figure 8: Select Associated Account on MPKs 11

Figure 9: Add Description on Line Keys 12

Figure 10: Add Extension Value on Line Keys 13

INTRODUCTION

Busy Lamp Field (BLF) feature allows an end user, such as attendant, to monitor the hook status of a list of users. GXP1628 supports Busy Lamp Field (BLF) feature on both Multi-Purpose Keys and Line Keys on the phone while GXP1620/1625 supports this feature through a Line Keys. This document serves as an end user guide on how to configure Grandstream GXP1620/1625/1628 phones for Busy Lamp Field feature.

To learn more about GXP1620/1625/1628's basic and advanced features, please visit link <http://www.grandstream.com/support> to download the latest "GXP1620/1625/1628 Administration Guide" and "GXP1620/1625/1628 User Guide".

OVERVIEW OF FUNCTIONS

Grandstream GXP1620/1625/1628 IP Phone supports Busy Lamp Filed (BLF) feature. GXP1628 supports this feature by changing the color and status of the MPK indicators, associated with the monitored users, and on the Programmable Line Keys on the phone body. GXP1620/1625 phones support this feature by changing the LED keys color and status on the Line Keys on phone body only.

CONFIGURATION VIA WEB BROWSER

GXP1620/1625/1628 embedded Web server responds to HTTP/HTTPS GET/POST requests. Embedded HTML pages allow a user to configure the IP phone through a Web browser such as Google Chrome, Mozilla Firefox and Microsoft's IE.

To access the Web GUI:

1. Connect the computer to the same network as the phone;
2. Make sure the phone is turned on and shows its IP address. You may check the IP address by pressing Up arrow button when phone is at idle state;
3. Open a Web browser on your computer;
4. Enter the phone's IP address in the address bar of the browser;
5. Enter the administrator's login and password to access the Web Configuration Menu

Note:

- The computer has to be connected to the same sub-network as the phone. This can be easily done by connecting the computer to the same hub or switch as the phone connected to. In absence of a hub/switch (or free ports on the hub/switch), please connect the computer directly to the PC port on the back of the phone;
- If the phone is properly connected to a working Internet connection, the IP address of the phone will display in MENU->Status->Network Status. This address has the format: xxx.xxx.xxx.xxx, where xxx stands for a number from 0-255. Users will need this number to access the Web GUI. For example, if the phone has IP address 192.168.40.154, please enter "http://192.168.40.154" in the address bar of the browser;
- There are two default passwords for the login page:

Table 1: Default Passwords for Login Page

User Level	User	Password	Web Pages Allowed
End User Level	user	123	Only Status and Basic Settings
Administrator Level	admin	admin	Browse all pages

The password is case sensitive with maximum length of 25 characters.

- When changing any settings, always SUBMIT them by pressing the "Save" or "Save and Apply" button on the bottom of the page. If the change is saved only but not applied, after making all the changes, click on the "APPLY" button on top of the page to submit. After submitting the changes in all the Web GUI pages, reboot the phone to have the changes take effect if necessary (All the options under "Accounts" page and "Phonebook" page do not require reboot. Most of the options under "Settings" page do not require reboot).

BLF KEYS CONFIGURATION ON LINE KEYS

To configure the BLF feature on Line Keys for GXP1620/1625/1628 phones:

- On the Web UI, click on "Settings".
- On the drop-down list, select "Programmable Keys", as the figure shows below:

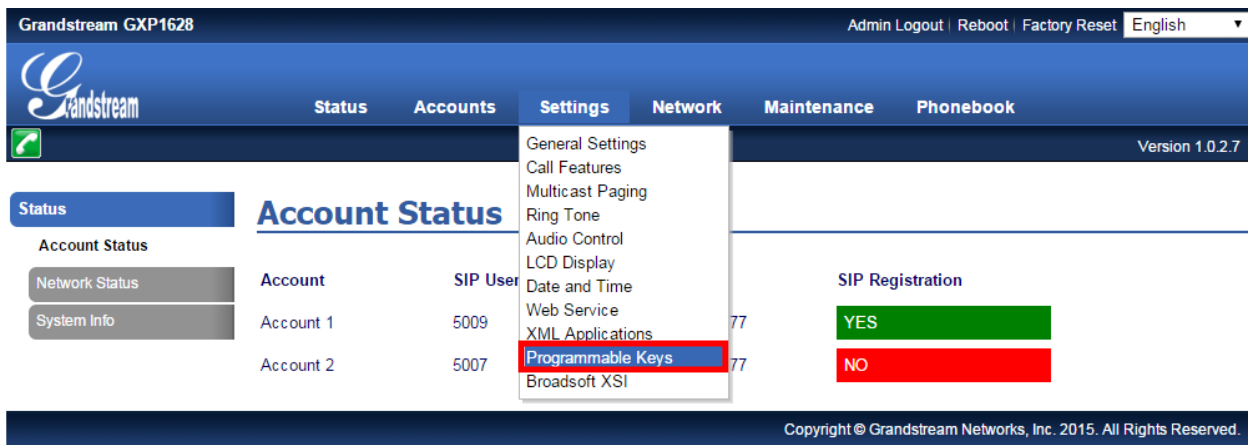


Figure 1: Programmable Keys Settings

- In Line Keys section, Click on the dropdown menu of the key being setup. Scroll down and select "Busy Lamp Field (BLF)".

Settings

- General Settings
- Call Features
- Multicast Paging
- Ring Tone
- Audio Control
- LCD Display
- Date and Time
- Web Service
- XML Applications
- Programmable Keys**
- Broadsoft XSI

Programmable Keys

Line Keys

Mode	Account	Description	Value
LINE 1	Account 1	Description	Value
LINE 2	Account 1	Description	Value

Multi-Purpose Keys

Mode	Account	Description	Value
MPK 1	Account 1	Description	Value
MPK 2	Account 1	Description	Value
MPK 3	Account 1	Description	Value
MPK 4	Account 1	Description	Value

Figure 2: Configure Multi-Purpose Keys on Line Keys

4. On the “Account” dropdown menu, select the account associated with the IP PBX that carries the extension being set up.

Settings

- General Settings
- Call Features
- Multicast Paging
- Ring Tone
- Audio Control
- LCD Display
- Date and Time
- Web Service
- XML Applications
- Programmable Keys**
- Broadsoft XSI

Programmable Keys

Line Keys

Mode	Account	Description	Value
LINE 1	Account 1	Description	Value
LINE 2	Account 2	Description	Value

Multi-Purpose Keys

Mode	Account	Description	Value
MPK 1	Account 1	Description	Value
MPK 2	Account 1	Description	Value

Figure 3: Select Associated Account on Line Keys

- In the “Description” field, type the name of the individual or department that you want to associate with the extension being set up.

The screenshot shows the Grandstream GXP1628 web interface. The top navigation bar includes 'Grandstream GXP1628', 'Admin Logout', 'Reboot', 'Factory Reset', and a language dropdown set to 'English'. The main menu has 'Status', 'Accounts', 'Settings', 'Network', 'Maintenance', and 'Phonebook'. The left sidebar shows 'Settings' with sub-items like 'General Settings', 'Call Features', 'Multicast Paging', 'Ring Tone', 'Audio Control', 'LCD Display', 'Date and Time', 'Web Service', 'XML Applications', 'Programmable Keys', and 'Broadsoft XSI'. The main content area is titled 'Programmable Keys' and is divided into two sections: 'Line Keys' and 'Multi-Purpose Keys'.

Line Keys

	Mode	Account	Description	Value
LINE 1	Busy Lamp Field (BLF)	Account 1	Marketing	Value
LINE 2	LINE	Account 1		Value

Multi-Purpose Keys

	Mode	Account	Description	Value
MPK 1	Speed Dial	Account 1	Description	Value
MPK 2	Speed Dial	Account 1	Description	Value
MPK 3	Speed Dial	Account 1	Description	Value
MPK 4	Speed Dial	Account 1	Description	Value
MPK 5	Speed Dial	Account 1	Description	Value
MPK 6	Speed Dial	Account 1	Description	Value
MPK 7	Speed Dial	Account 1	Description	Value
MPK 8	Speed Dial	Account 1	Description	Value

At the bottom of the page, there are three buttons: 'Save', 'Save and Apply', and 'Reset'.

Figure 4: Add Description on Line Keys

- In the “Value” field, type the extension number for the extension being set up.

Settings

- General Settings
- Call Features
- Multicast Paging
- Ring Tone
- Audio Control
- LCD Display
- Date and Time
- Web Service
- XML Applications
- Programmable Keys**
- Broadsoft XSI

Programmable Keys

Line Keys

	Mode	Account	Description	Value
LINE 1	Busy Lamp Field (BLF)	Account 1	Marketing	1234
LINE 2	LINE	Account 1	Description	Value

Multi-Purpose Keys

	Mode	Account	Description	Value
MPK 1	Speed Dial	Account 1	Description	Value
MPK 2	Speed Dial	Account 1	Description	Value
MPK 3	Speed Dial	Account 1	Description	Value
MPK 4	Speed Dial	Account 1	Description	Value
MPK 5	Speed Dial	Account 1	Description	Value
MPK 6	Speed Dial	Account 1	Description	Value
MPK 7	Speed Dial	Account 1	Description	Value
MPK 8	Speed Dial	Account 1	Description	Value

Save
Save and Apply
Reset

Figure 5: Add Extension Value on Line Keys

7. Go to the bottom of the page, and click on “Save and Apply”.

BLF KEYS CONFIGURATION ON MPKs (GXP1628 ONLY)

To configure the BLF feature on Line Keys for GXP1628 phones:

1. On the Web UI, click on “Settings”.
2. On the drop-down list, click on “Programmable Keys”, as the figure shows below:

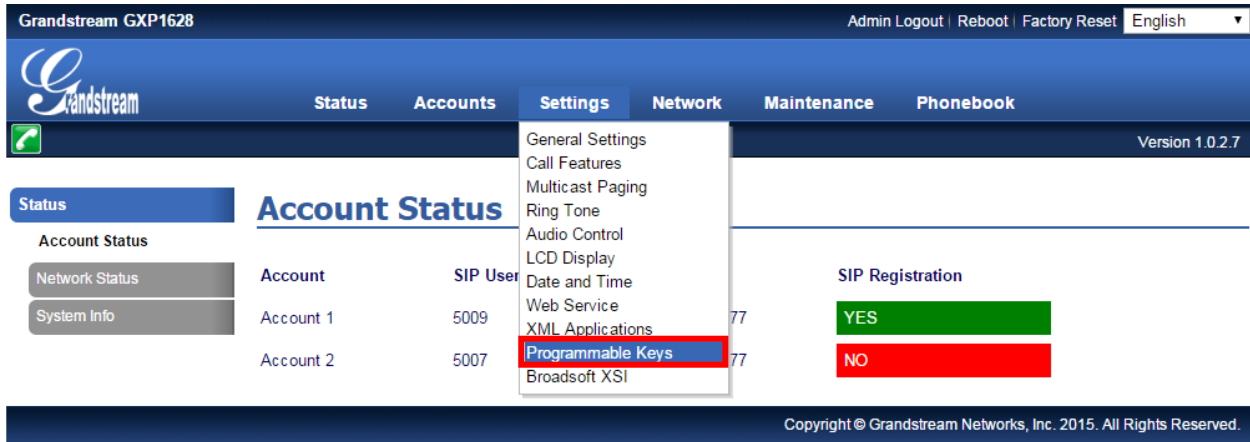


Figure 6: Programmable Keys Settings on MPKs

3. In Multi-Purpose Keys section, Click on the dropdown menu of the key being setup. Scroll down and select "Busy Lamp Field (BLF)".

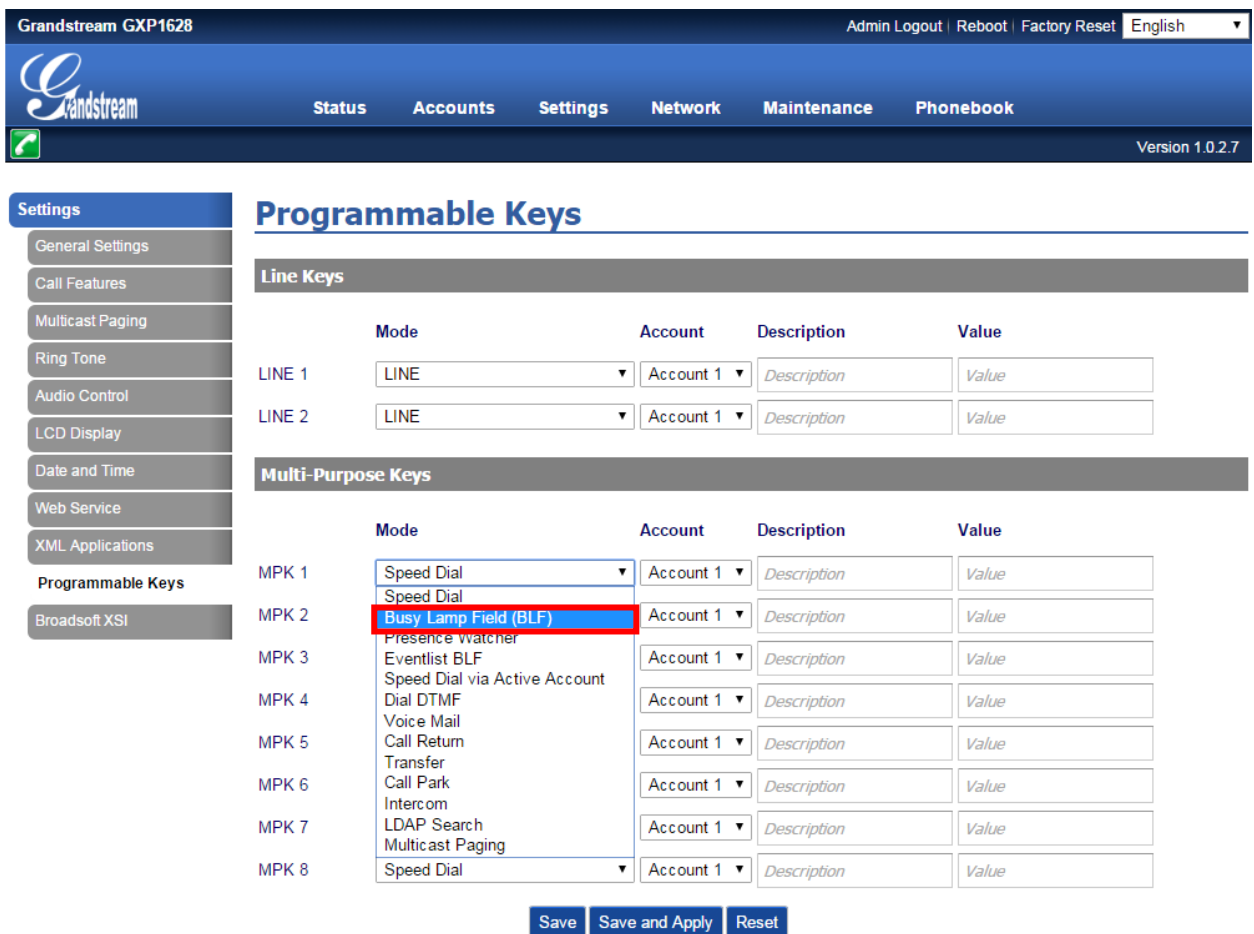


Figure 7: Configure Multi-Purpose Keys on MPKs

- On the “Account” dropdown menu, select the account associated with the IP PBX that carries the extension being set up.

The screenshot shows the Grandstream GXP1628 web interface. The top navigation bar includes 'Status', 'Accounts', 'Settings', 'Network', 'Maintenance', and 'Phonebook'. The left sidebar lists various settings categories, with 'Programmable Keys' selected. The main content area is titled 'Programmable Keys' and contains two sections: 'Line Keys' and 'Multi-Purpose Keys'.

Line Keys

	Mode	Account	Description	Value
LINE 1	LINE	Account 1	Description	Value
LINE 2	LINE	Account 1	Description	Value

Multi-Purpose Keys

	Mode	Account	Description	Value
MPK 1	Busy Lamp Field (BLF)	Account 1	Description	Value
MPK 2	Speed Dial	Account 1	Description	Value
MPK 3	Speed Dial	Account 1	Description	Value
MPK 4	Speed Dial	Account 1	Description	Value
MPK 5	Speed Dial	Account 1	Description	Value
MPK 6	Speed Dial	Account 1	Description	Value
MPK 7	Speed Dial	Account 1	Description	Value
MPK 8	Speed Dial	Account 1	Description	Value

At the bottom of the 'Multi-Purpose Keys' section, there are three buttons: 'Save', 'Save and Apply', and 'Reset'.

Figure 8: Select Associated Account on MPKs

- In the “Description” field, type the name of the individual or department that you want to associate with the extension being set up.

- Settings
- General Settings
- Call Features
- Multicast Paging
- Ring Tone
- Audio Control
- LCD Display
- Date and Time
- Web Service
- XML Applications
- Programmable Keys**
- Broadsoft XSI

Programmable Keys

Line Keys				
	Mode	Account	Description	Value
LINE 1	LINE ▾	Account 1 ▾	Description	Value
LINE 2	LINE ▾	Account 1 ▾	Description	Value

Multi-Purpose Keys				
	Mode	Account	Description	Value
MPK 1	Busy Lamp Field (BLF) ▾	Account 1 ▾	Warehouse	Value
MPK 2	Speed Dial ▾	Account 1 ▾	Description	Value
MPK 3	Speed Dial ▾	Account 1 ▾	Description	Value
MPK 4	Speed Dial ▾	Account 1 ▾	Description	Value
MPK 5	Speed Dial ▾	Account 1 ▾	Description	Value
MPK 6	Speed Dial ▾	Account 1 ▾	Description	Value
MPK 7	Speed Dial ▾	Account 1 ▾	Description	Value
MPK 8	Speed Dial ▾	Account 1 ▾	Description	Value

Save
Save and Apply
Reset

Figure 9: Add Description on Line Keys

6. In the "Value" field, type the extension number for the extension being set up.

Grandstream GXP1628 Admin Logout | Reboot | Factory Reset | English

Grandstream Status Accounts Settings Network Maintenance Phonebook

Version 1.0.2.7

Settings

- General Settings
- Call Features
- Multicast Paging
- Ring Tone
- Audio Control
- LCD Display
- Date and Time
- Web Service
- XML Applications
- Programmable Keys**
- Broadsoft XSI

Programmable Keys

Line Keys

Mode	Account	Description	Value
LINE 1	LINE	Account 1	Description
LINE 2	LINE	Account 1	Description

Multi-Purpose Keys

Mode	Account	Description	Value
MPK 1	Busy Lamp Field (BLF)	Account 1	Warehouse
MPK 2	Speed Dial	Account 1	Description
MPK 3	Speed Dial	Account 1	Description

Figure 10: Add Extension Value on Line Keys

7. Go to the bottom of the page, and click on “Save and Apply”.

VISUAL INDICATORS

The phone system is able to notify the end user the hook status of the monitored extension by changing the LED colors.

For example, if the monitored extension is ringing, the BLF indicator status will be changed from solid green to blinking red; and if the monitored extension answers the call, the BLF indicator status will be changed from blinking red to solid red.

The following table shows the BLF indicator status in different scenarios:

Table 2: The BLF Indicators Status in Different Scenarios

Monitored Extension Behavior	BLF Indicator Status (LINE Keys/MPKs on Phone Body)	Extension Board Key Status (On Mounted Extension Board)
Idle	Solid green	Solid green
Placing a call	Solid red	Solid red
Ringing	Blinking red	Blinking red
During a call	Solid red	Solid red
Hold the call	Solid red	Solid red
Monitored extension not registered/BLF subscription failed	Off	Off