

Grandstream Networks, Inc.

GAC2500 Audio Conference Phone **GUI Customization Guide**



Table of Contents

INTRODUCTION.....	4
HOW TO CUSTOMIZE GAC2500 LCD GUI.....	5
HTTPD SERVICE.....	6
CONFIGURATION GUIDE.....	7
App Settings	7
Add 3 rd Party Applications	8
Layout Settings	9
Contacts Settings	10
Screen Settings	11
Language and Keyboard Settings	12
Widget Settings	12



Table of figures

Figure 1: App Settings page.....	7
Figure 2: Add third Party application settings.....	8
Figure 3: Layout Settings Page.....	9
Figure 4: Contacts Settings Page	10
Figure 5: Screen Settings Page	11
Figure 6: Language Settings Page	12
Figure 7: Taskbar Settings Page	12



INTRODUCTION

Grandstream GAC2500 Audio Conference Phone allows users to customize the GUI desktop layout and display, offering users with flexibility and control. The GUI Configuration Tool facilitates displaying/hiding certain applications, configuring parameters on the GAC2500 with specific configuration items, controlling the display appearance and much more.

This document describes how to use the Grandstream Graphical GUI Customization Tool to customize the GAC2500 GUI settings and applications. This tool allows users to do the following on applications running on the GAC2500:

- Turn on/off applications
- Set up parameters
- Personalize phone display
- Turn on/off certain functions on applications

The Grandstream Graphical GUI Customization Tool is available for download from the following link:

<http://www.grandstream.com/support/tools>




HOW TO CUSTOMIZE GAC2500 LCD GUI

1. Unzip the tool package. Double click on “gui_config_tool.exe” to start up the tool. Single click on GAC2500 picture to get into the GAC2500 GUI customization interface.
2. Set up the parameters and application configurations.
3. Generate the GAC2500 custom file “gac2500cust” by clicking on “File” → “Save As”. The tool also allows users to read and edit the existing custom files.
4. Put the generated custom file “gac2500cust” on your HTTP/TFTP/HTTPS server.
5. Point the phone's configuration file path to the directory on the server where the custom file locates.
6. Reboot the phone to trigger the upgrade.
7. After booting up, GAC2500 LCD shall display the customized GUI.



HTTPD SERVICE

The GUI Customization Tool has a built-in HTTPD server which provides users the convenience to provision the GAC2500 without having to install a dedicated provisioning server. After generating a custom file “gac2500cust” on the local PC, click on the “Server -> Open HTTPD” option or the HTTPD

icon  to enable HTTPD service. A pop-out window showing the HTTP server address and port will be displayed. Users need to enter the HTTP server address and port on the GAC2500, and reboot the device to provision GAC2500.



CONFIGURATION GUIDE

App Settings

Under the GAC2500 VOIP Phone Config tool interface → App Settings, the user has the ability to manage and customize everything about the applications pre-installed on the GAC2500. See the following figure.

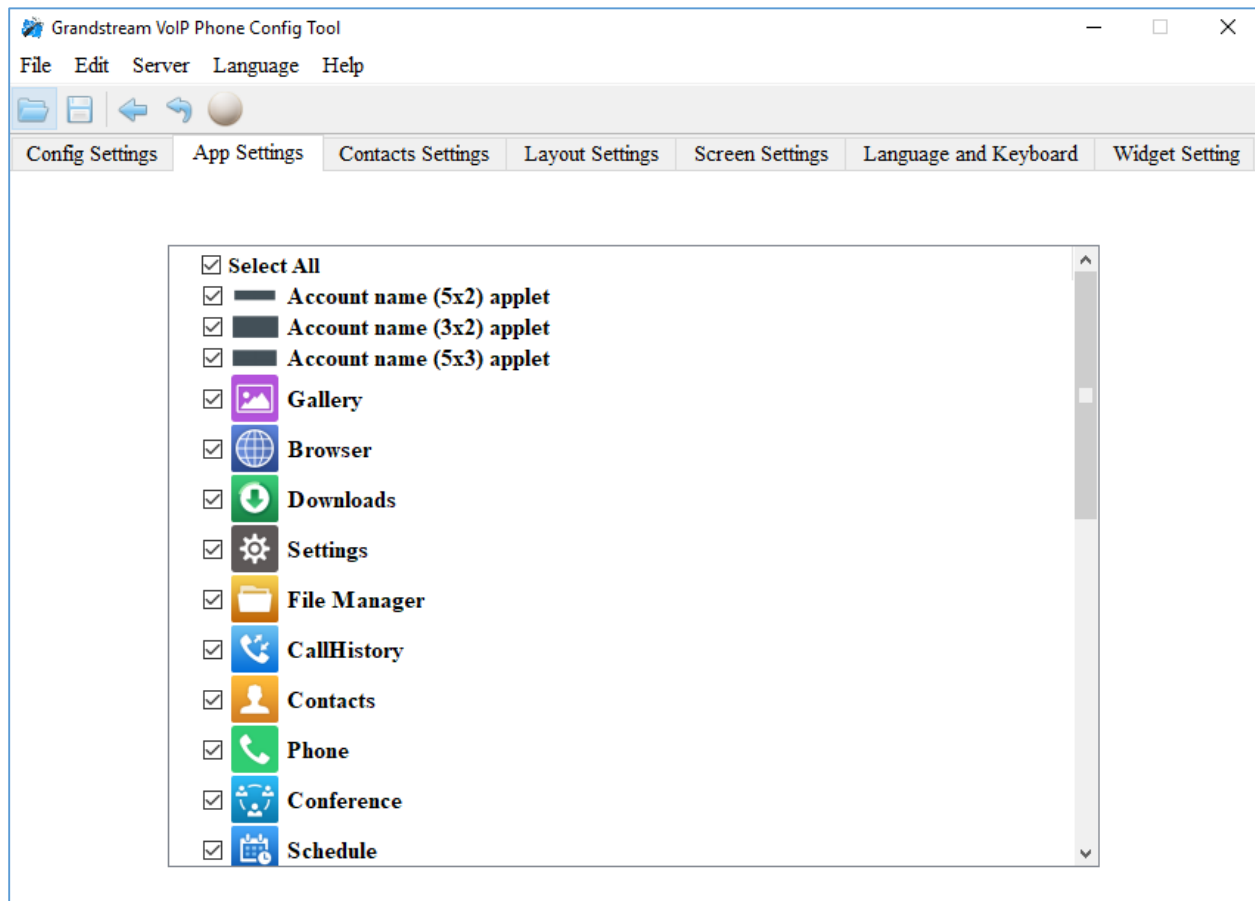


Figure 1: App Settings page

In this section, users could configure the following:

- Edit menu layout structure
- Enable or disable specific application
- Edit options to be displayed on GUI interface for a specific application, which includes icon and text for description purpose (Default settings will be applied if there is no change made)
- Add submenu or link by right-clicking on the left panel list.

Note: On the left panel, “Phone”, “Settings” and “Call History” are mandatory.



Add 3rd Party Applications

To add a third party application, with the cursor located within the left panel, right-click the mouse, a drop-down menu will appear, with two options “add submenu” and “add3rdApp”.

Click on “add3rdApp”, a pop-up window “Add Third Party Application” will be shown. See the following figure. Browse and select an “icon” and an “apk”, enter a “Display Name”, and click on “Add”.

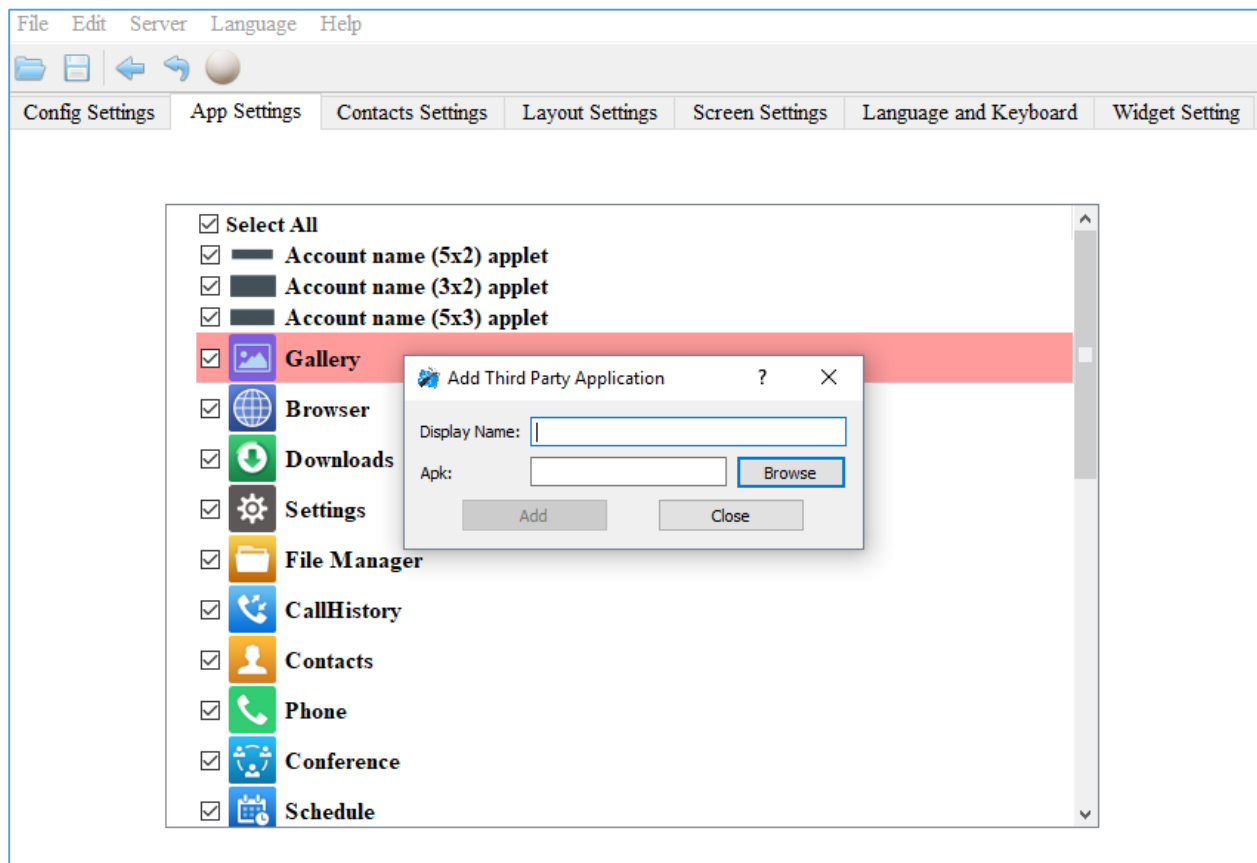


Figure 2: Add third Party application settings

A third-party application with the icon and display name shows up in the left panel.



Layout Settings

This settings page gives the admin the ability to set the graphic design he wants by changing and modifying the visual structure of the GAC2500 user interface. *See the following figure.*

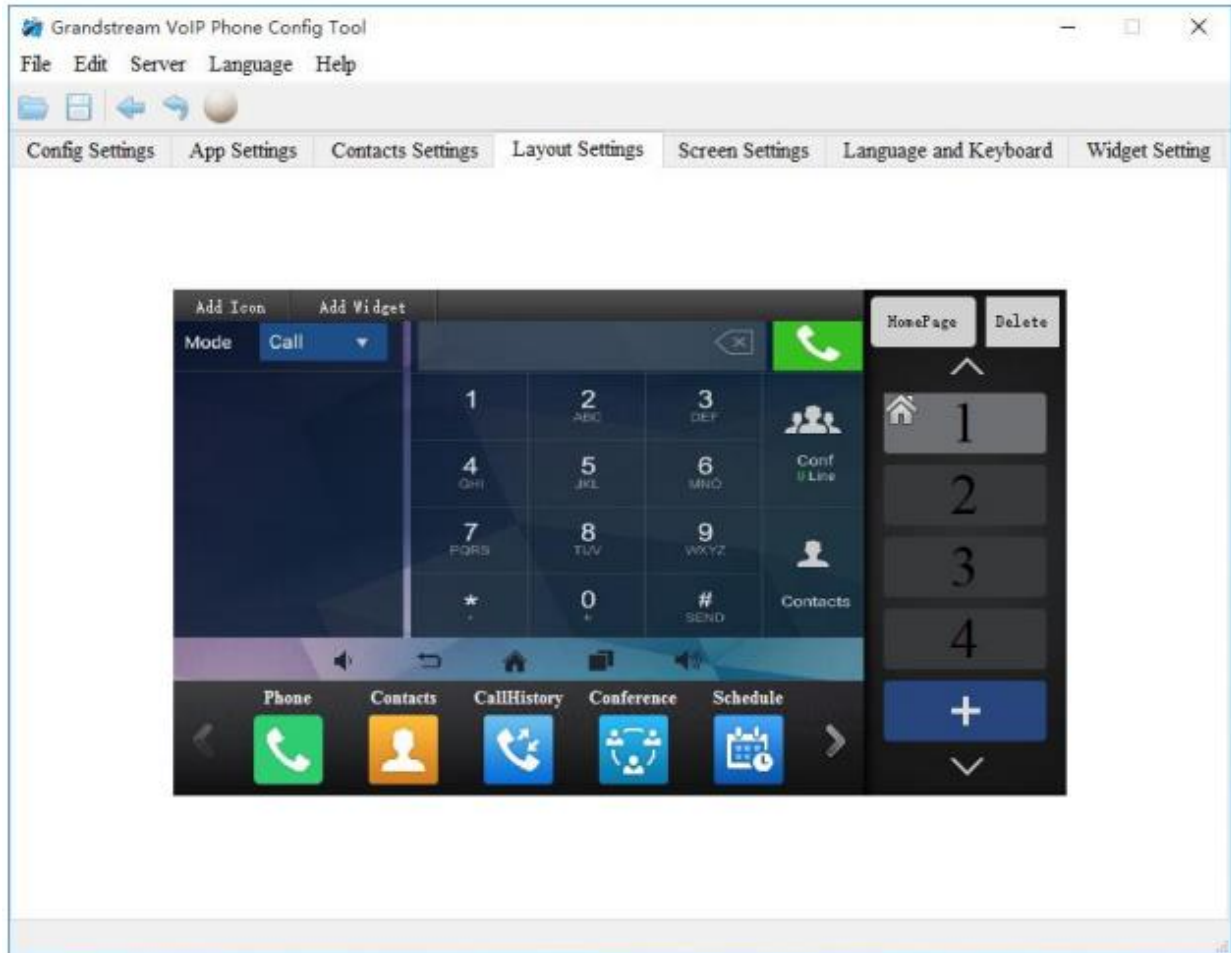
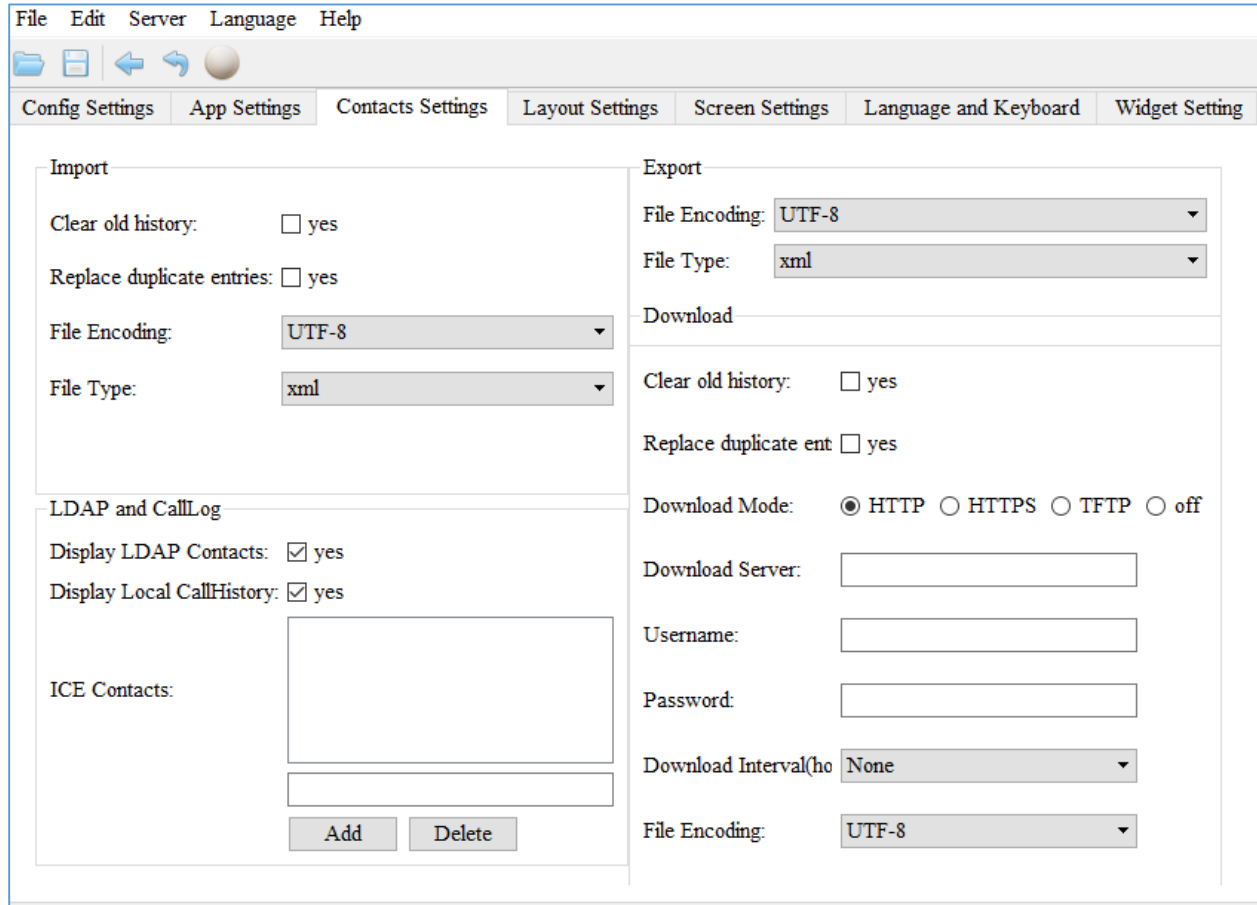


Figure 3: Layout Settings Page



Contacts Settings

The "Contacts Settings" section on the Config Tool, as can be seen, provides the parameters for Contacts Export/Import, LDAP and phonebook download for the GAC2500.



The screenshot shows the 'Contacts Settings' page in the Grandstream Config Tool. The interface includes a menu bar (File, Edit, Server, Language, Help) and a toolbar. The 'Contacts Settings' tab is selected. The page is divided into two main sections: 'Import' and 'Export'.

Import Section:

- Clear old history: yes
- Replace duplicate entries: yes
- File Encoding: UTF-8
- File Type: xml

Export Section:

- Clear old history: yes
- Replace duplicate ent: yes
- Download Mode: HTTP HTTPS TFTP off
- Download Server: [Text Input]
- Username: [Text Input]
- Password: [Text Input]
- Download Interval(ho): None
- File Encoding: UTF-8

LDAP and CallLog Section:

- Display LDAP Contacts: yes
- Display Local CallHistory: yes

ICE Contacts Section:

- ICE Contacts: [Text Area]
- [Add] [Delete]

Figure 4: Contacts Settings Page



Screen Settings

In the Screen Settings page, the admin can select screen image from the available ones or import it by clicking on “Select image”.

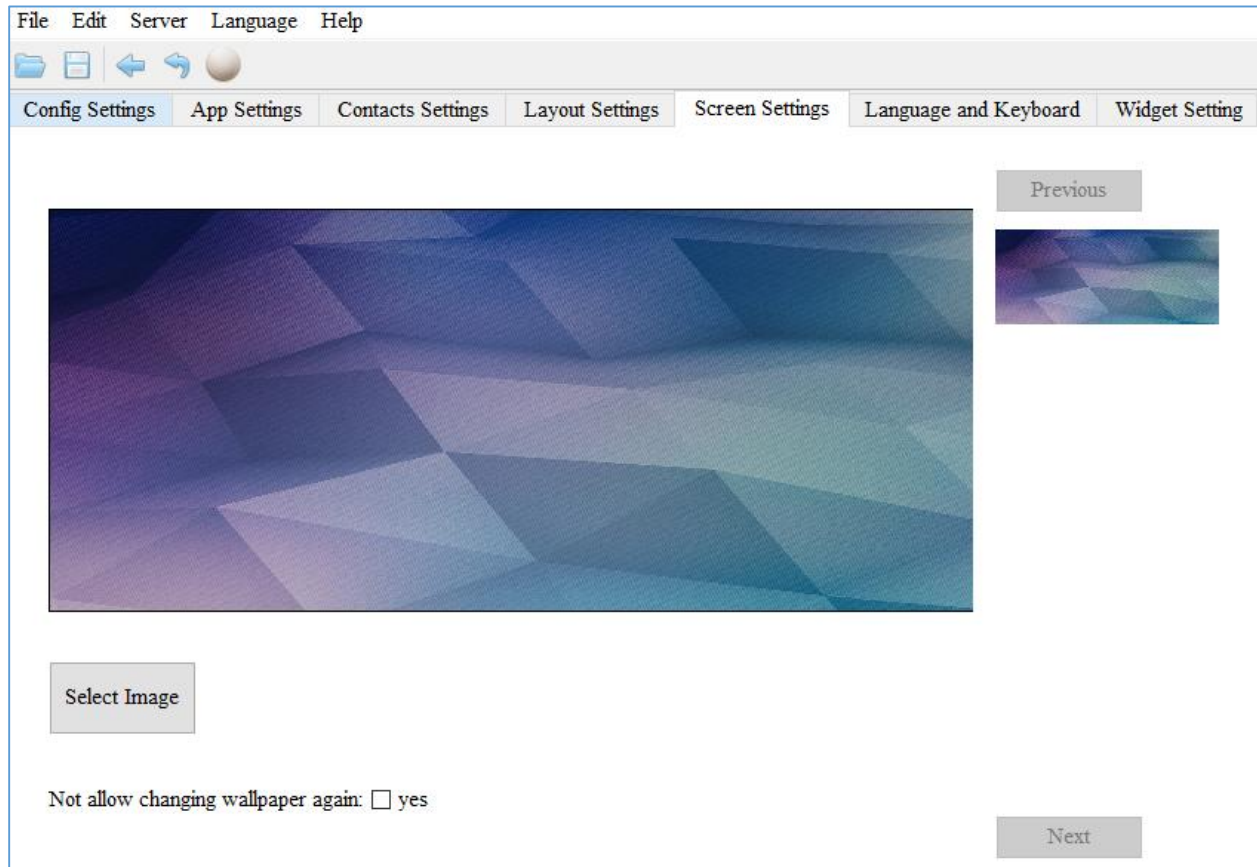


Figure 5: Screen Settings Page

Note:

To prevent the user from changing the background image on the device, admin firstly needs to uncheck “Gallery” in the App Settings Page and then, check “Not allow changing wallpaper again” option in the Screen Settings Page.



Language and Keyboard Settings

This page is for choosing the phone's display language among 40 languages available under "Language Settings". The admin has also two Keyboard choices: "Android Keyboard(AOSP)" or "Google Pinyin IME" available under "Select Input Method".

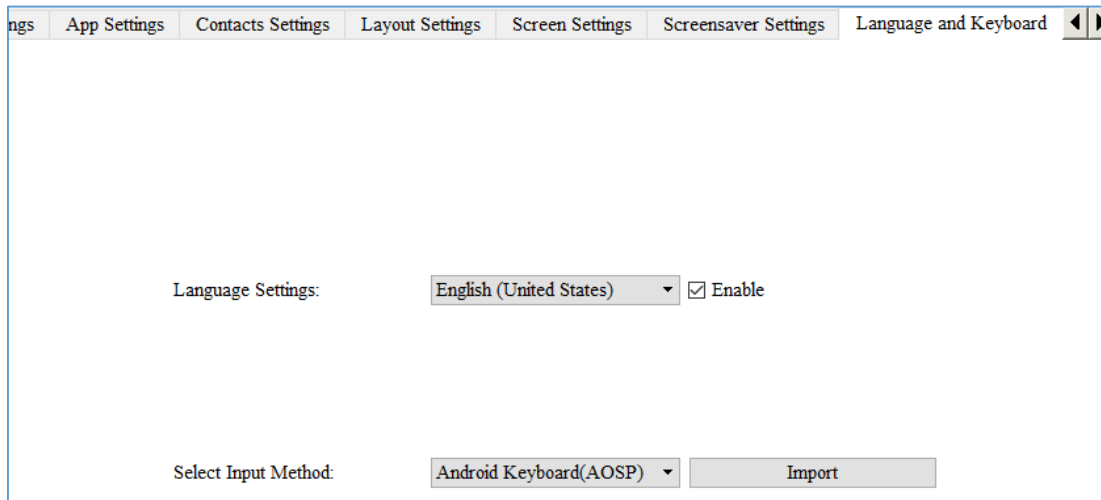


Figure 6: Language Settings Page

Widget Settings

Admin can customize the taskbar in the edge of the screen by choosing the useful programs and applications and their number in order to allow the user to run multiple programs and quickly switch among them by clicking the appropriate icon on the taskbar. See following figure.

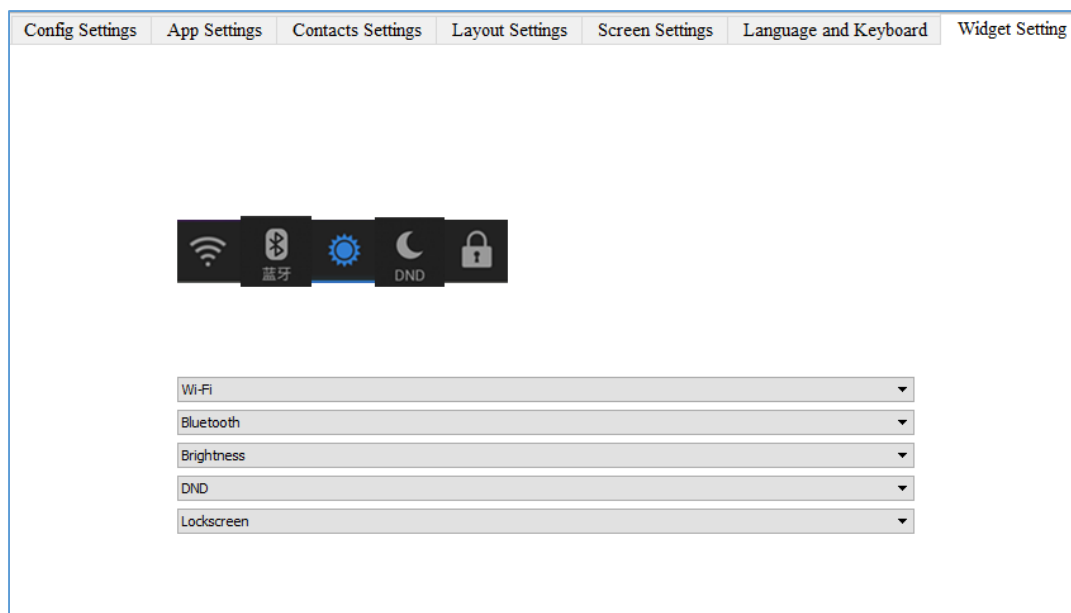


Figure 7: Taskbar Settings Page

